

# ARCGIS FOR SPATIAL ANALYSIS

## COURSE INFO

[ 5 - 10 DAYS / 20 HOURS ]

### ArcGIS System Software

- What is GIS?
- ArcGIS versions
- Layers, attributes, features, selections, and attribute tables

### Geospatial and Spatial Data

- Vector vs Raster data
- Metadata
- Projection and coordinate systems

### Preparing the Development Environment

- Installing and configuring ArcGIS Desktop

### ArcGIS and its Functionalities

- Applying and visualizing spatial data
- Identifying features and values
- Creating selections
- Zooming and measuring
- Using Shapefile geometry
- Working coordinate systems
- Using ArcCatalog
- Modifying metadata

### Raster Data

- Displaying rasters
- Merging rasters
- Resampling and reclassifying rasters
- Clipping a raster
- Extracting raster value points
- Geo-referencing a raster

### Vector Data

- Using Shapefile attributes
- Spatial joining with tabular data
- Creating choropleth maps

### Organize Maps

- Adding data to a map
- Importing data
- Editing properties and symbology

### Data Creation

- Implementing new data files
- Drawing new features
- Plotting points
- Joining data
- Clipping data
- Creating buffers

### Finalizations and Optimizations

- Using map layouts
- Working with a locator map
- Creating legends
- Implementing scale bars and titles
- Exporting and printing maps



+ - 1 International exams

- additional in price:

Get internationally accredited & recognized in under 3 months!

# START ANYTIME!

+2782 696 7749

info@schoolofit.co.za



## ABOUT

ArcGIS is a family of client, server and online geographic information system software developed and maintained by Esri.

2x Internationally award-winning



Click to Enrol

PRICE: R22 800 / \$1200 / €1200 / £1000

Full Payment before commencement (no payment plan)

# ARCGIS WITH PYTHON SCRIPTING

## COURSE INFO

[ 5 - 10 DAYS / 20 HOURS ]

### Geospatial and Spatial Data

- Vector vs Raster data
- Metadata
- Projection and coordinate systems

### Python in Depth

- Data types
- Variables, functions and conditional statements
- Loops and lists
- Classes and objects

### ArcPy for ArcGIS

- Help overview
- Tool and Python references

### Preparing the Development Environment

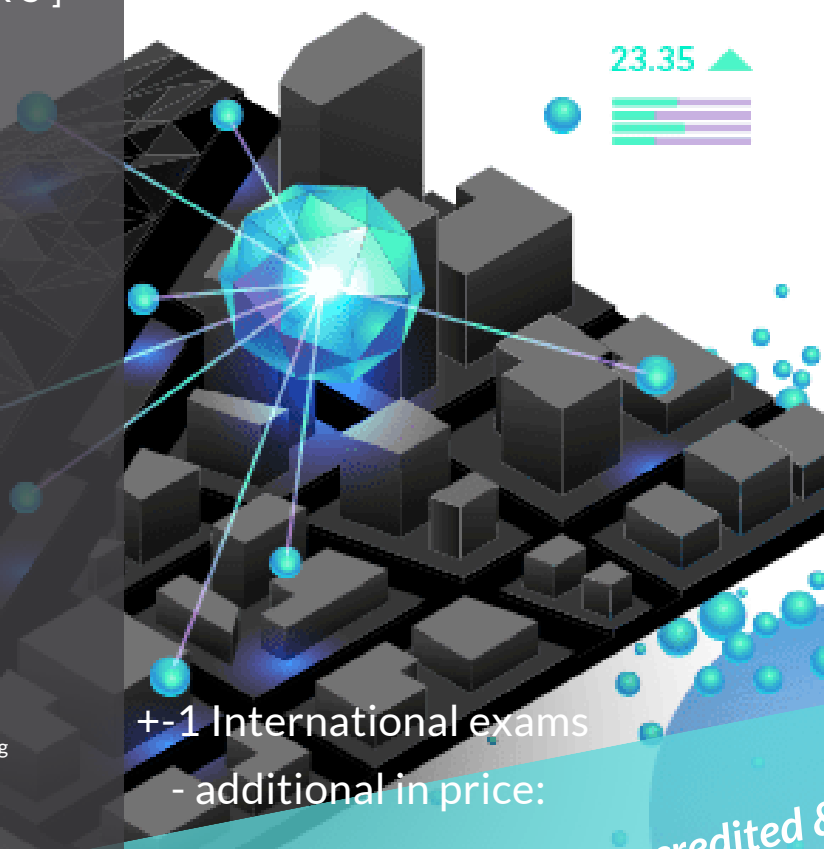
- Installing and configuring ArcGIS Desktop

### Geoprocessing and Workflows

- Creating a project
- Saving code as a script
- Working with toolboxes
- Creating a custom toolbox
- Documenting scripts
- Overwriting output
- Setting current workspace and extent in geoprocessing

### ArcPy Package

- Performing inventory
- Listing workspaces, datasets, classes, tables, and fields
- Describing and walking data
- Working with geometries
- Using arcpy.da
- Implementing symbology
- Adding and manipulating layers



+1 International exams

- additional in price:

Get internationally accredited & recognized in under 3 months!  
**START ANYTIME!**

+2782 696 7749

info@schoolofit.co.za



## ABOUT

ArcGIS is a family of client, server and online geographic information system software developed and maintained by Esri.

2x Internationally award-winning



**PRICE: R22 800 / \$1200 / €1200/ £1000**

*Full Payment before commencement (no payment plan)*

**Click to Enrol**

# ARCGIS PRO FOR SPATIAL ANALYSIS

COURSE INFO  
[ 2 MONTHS / 40 HOURS ]

- Module 1: Introduction to GIS
- Module 2: Introduction to ArcGIS pro
- Module 3: Exploring Spatial Relationships - includes joins/merges/intersects
- Module 4: Creating and Editing Data
- Module 5: Symbology in ArcGIS Pro
- Module 6: Exploring Map Layouts
- Module 7: Analysis of multiple different types of datasets from different sources
- Module 8: Overview/ understand of different types of geospatial files
- Module 9: ArcGIS Pro basics: finding your way around the new interface
- Module 10: Using the ribbon and tool bars to find the right tool
- Module 11: Displaying data in ArcGIS Pro: Add data and updating layer symbology
- Module 12: Data Management: Creating your own projects and data for use in ArcGIS Pro
- Module 13: Editing tools: Using the Edit ribbon to add, remove and modify your features in ArcGIS Pro
- Module 14: Understanding 3D: Accessing the 3D options within ArcGIS Pro to view and explore layers in a 3D environment.



+1 International exams  
- additional in price:

Get internationally accredited & recognized in under 3 months!  
**START ANYTIME!**

+2782 696 7749  
info@schoolofit.co.za



## ABOUT

ArcGIS is a family of client, server and online geographic information system software developed and maintained by Esri.

2x Internationally award-winning



PRICE: R32 700 / \$2000 / €1800 / £1800

Full Payment before commencement (no payment plan)